

EDGETEQ S-200

Simply a better edge.
The promotion class for trades.





**Simply
a better
edge.**

Perfect edges produced with flexible machines for demanding customers

Individual customer requirements, sophisticated products and a large range of materials — these are all requirements that play a key role in today's wood processing sector. It is therefore important that production is flexible and efficient, especially in woodworking shops and for medium-sized businesses.

HOMAG offers you unbeatable advantages, has an international production network as well as sales and service companies, with a presence in more than 100 countries and around 7000 employees. HOMAG can help make your business competitive and ensure lasting business success.

In short:

YOUR SOLUTION

[MORE AT HOMAG.COM](https://www.homag.com)



EDGETEQ S-200

CONTENTS

- 04 The most important features
- 05 Edge parameters
- 10 easyTouch control systems
- 11 Our unit modules
- 26 Technical data
- 27 Life Cycle Services

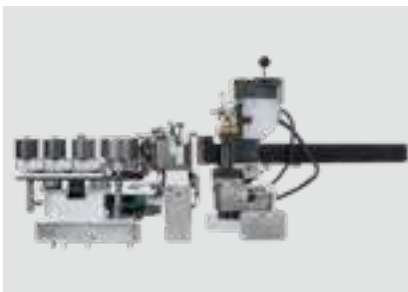
Eight models plus extensions — the choice is yours

The most important features

The extensive equipment makes this series stand out: for example, PUR top roll pressure rollers for precise workpiece guiding, as well as optimized trimming tools for optimum chip removal and perfect processing quality. In addition, all machines can be extended. Additional units such as scrapers or buffing units can be set up on specific machines with empty slots.

MACHINES IN THE HOMAG EDGETEQ S-200 SERIES ARE ENERGY EFFICIENT AND ENVIRONMENTALLY FRIENDLY.

- High-quality furniture with high-quality edges
- More output due to high availability
- Low energy requirements
- High levels of efficiency
- Optimum price/performance ratio



Gluing stations for safe hot-melt glue application

HOMAG gluing stations are ideal for quick, solid gluing. The heated gluing roller ensures an optimal glue temperature.



Edge gluing with PUR

At HOMAG, PUR glues are processed on the same machines and with the same application unit as EVA hot-melt glues.



Zero joint technology with HOMAG airTec

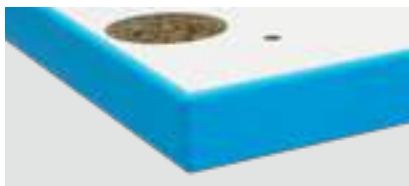
Simple integration into the magazine in addition to the classic glue application with gluing roller. Available on the models 1110 AT, 1120 AT and 1130 AT.



Material types

EDGE PARAMETERS

A high level of flexibility is achieved through the processing of all types of edge materials: melamine, ABS/PVC, solid strip and veneer. Special tracing elements are ideal for processing sharp-angled or blunt-angled parts or parts with hinge holes.



			a	b	c	d
	Solid (mm)		for b = 22: min. 70	8-60	0.4-3.0 (6.0)*	45/65
	Rollers (mm)				0.3-3.0	
	Strips (mm)				0.4-3.0	



Rediscover your competitive edge.

Our solution for your requirements

If you are new to mechanical edge processing, you have come to the right place. Intuitive operation, initial automation and flexibility in the equipment are the hallmarks of the compact edge banding machines of the EDGETEQ S-200 series.



On the cutting edge.

EDGESEQ S-200

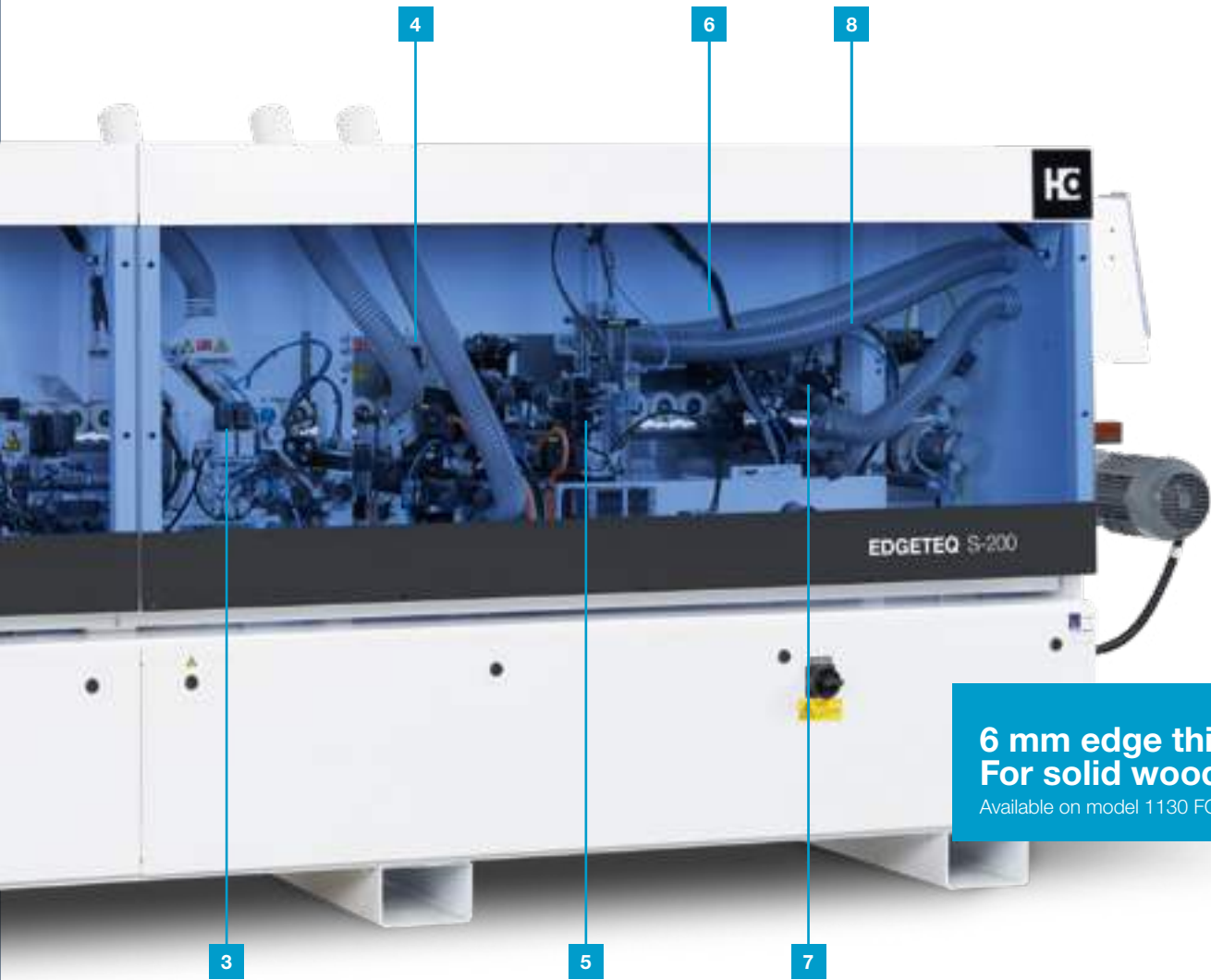
MODEL 1130 FC

This machine offers a smart solution at an entry-level price point, specially designed for woodworking shops. A joint trimming unit prepares the workpiece edge to create an optimal joint. The precise gluing station features a special coating that also allows easy processing of PUR adhesive.

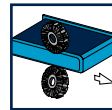
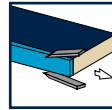
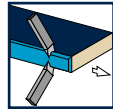
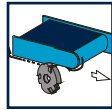
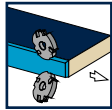
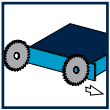
The automatic fixed length magazine is equipped for a secure supply of material. The snipping unit, which has two motors, guarantees a precise cut and the best results with an easily adjustable pneumatics system. The impressive trimming unit can be simply adjusted between radius, chamfer and flush trimming modes. In addition, there is a profile trimming unit for the complete processing of workpieces, including corner processing. The finishing area has three units, which are equipped with a pneumatically adjustable profile scraper with quick-change heads, a glue joint scraper and a buffing unit.

The special feature in this performance class: three post-processing units in the finishing area operating alongside a profile trimming unit. This guarantees full flexibility in the post-processing of workpieces.





6 mm edge thickness
For solid wood strips
 Available on model 1130 FC, 1120 F, 1130 AT



1 Joint trimming unit

2 Gluing station

3 Snipping unit

4 Trimming unit

5 Profile trimming unit

6 Profile scraper

7 Glue joint scraper

8 Buffing unit

easyTouch

SIMPLE TOUCHES WITH EFFECTIVE RESULTS

The easyTouch control system enables simple and intuitive operation of the machine. Simple touches on the touchscreen interface guarantee fast navigation combined with ease of use.



Betriebsdatenerfassung		1, 2mm ABS	
Stunden Gesamt	h	1274.00.00	X
Werkstücke Gesamt	Stk	446942	
Kantenlänge Gesamt	m	384621	
Stunden	h	0.45.00	Reset
Werkstücke	Stk	200	Reset
Kantenlänge	m	233.50	Reset

The operating hours for each commission are recorded accurately thanks to state-of-the-art operating data acquisition.

The benefits

- Clear 7" graphic display provides optimum control via touching the control panel directly
- 20 storable programs guarantee flexibility when processing a wide variety of edge materials and changing customer requirements
- Production readiness displayed by traffic light indicator
- Ability to adjust units quickly thanks to direct access via ctrl keys
- Intuitive, user-oriented navigation
- Clear overview of the help and assistant functions, including the glue tank temperature or troubleshooting in plain text

A detailed close-up photograph of industrial machinery. The image shows a large, silver-colored gear with many teeth, partially illuminated by a bright light source. To the right, a yellow component, possibly a cutting tool or a part of a conveyor system, is visible. The background is filled with various metal parts, bolts, and structural elements of the machine, creating a complex and technical scene.

Our unit modules

THE RIGHT SOLUTION, WHATEVER THE REQUIREMENT

For wide-ranging and diverse processing tasks, we use units from our tried-and-tested unit modules. We are constantly expanding our functions so we can offer you the right solution for new trends. The following pages contain units from the fields of joint trimming, gluing, cutting, profile trimming and finishing. You benefit from a high level of precision and state-of-the-art technology, and the ability to produce your products flexibly and efficiently.

Sprayers

Sprayers improve the edge quality throughout processing.
Separating agents prevent hot-melt glue residues forming deposits.
Adhesive residues can be easily removed using cleaning spray.
Lubricants prevent shiny marks on the workpieces and protect sensitive surfaces before post-processing.



- 1** Separating agent
- 2** Lubricant
- 3** Anti-static agent
- 4** Cleaning agent



Anti-static agent

For cooling the glue joint and static discharge of the edgeband.
(Only in conjunction with airTec)

Spraying device

Spraying agents for optimal processing results, even for sensitive surfaces.

Joint trimming units

Our joint trimming units form the basis for precise, absolutely straight and tear-free workpiece edges and glue joints with consistently high product quality.



Joint trimming unit

Diamond tools ensure perfect cutting and a long service life, as well as optimal glue joint quality. The diameter is 100 mm.



Gluing stations

RELIABLE HOT-MELT GLUE APPLICATION

HOMAG gluing stations are ideal for quick, solid gluing. The heated gluing roller ensures an optimal glue temperature.



Gluing stations

Quick-change application unit with hot-melt glue supply from below. Can process PUR granulate.

The benefits

- Optimal glue application to narrow workpiece faces
- Glue application roller does not need to be changed for different workpiece thicknesses
- Gluing roller lifts when feed stops
- Gluing roller with integrated heating unit guarantees a constant temperature and viscosity for all workpiece thicknesses
- Tracing pad prevents wear to the application roller and ensures a constant glue film thickness
- The application unit can be easily removed thanks to the quick-release lock



NEW: QA65N application unit

STEP INTO A NEW LEVEL OF QUALITY



The benefits

- Industry standard in the entry-level segment
- Easy, quick and safe removal of the application unit
- No dirt on the workpiece
- Short heating time



Magazine height adjustment:

The edge overhang on the underside can be increased by adjusting the magazine plate. (1120 F and 1130 FC models only)



Strip separation:

The use of a vacuum suction unit makes it very easy to separate thin veneer, HPL or composite strips with an edge thickness of 0.4 to 1.0 mm. (1120 F, 1130 FC and 1130 AT models only)



Servo edge feed:

The direct drive enables a more precise edge position without gears and drive units, which increases the durability and operational safety and reduces the maintenance effort. (Standard on 1120 F, 1130 FC and 1130 AT models)

PUR glue and HOMAG

A STRONG BOND

Using PUR hot-melt glue increases the resistance of furniture to moisture and heat. It is ideal for use on furniture in damp areas such as bathrooms, kitchens and laboratories.

The benefits

- One application unit for all types of glue
- No additional application unit required
- Fast, solid thin-film application using a gluing roller with integrated heating unit
- To be used as standard from the entry-level model to the high-end machine



Systematic gluing

For solid gluing, it is crucial to achieve an optimum interplay of very different factors. On HOMAG machines, the application unit, quick-release system, magazine and pressure zone are perfectly aligned.



[EDGETEQ S-200 pressure zone](#)

Pressure zone up to an edge thickness of 3 mm and a panel height of 40 mm for optimum glue joint quality.



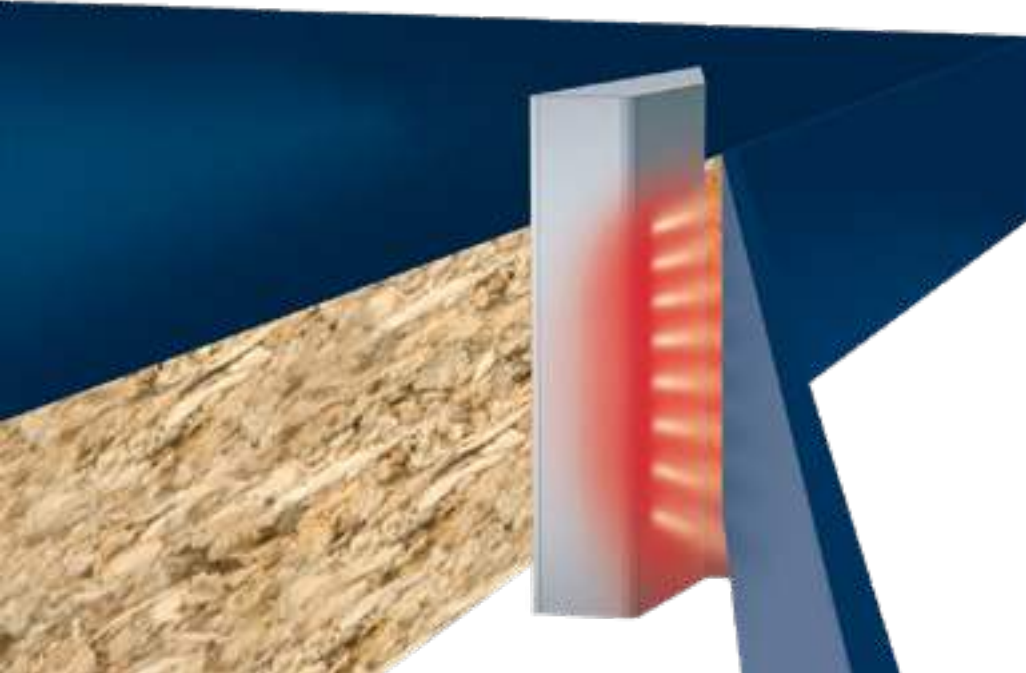
[EDGETEQ S-200, 1130 FC model pressure zone](#)

Heavy pressure zone up to 6 mm edge thickness and 60 mm panel height for optimum glue joint quality.



[Vacuum container](#)

- Compact, portable tank for the bottom application unit which is filled with PUR glue.
- No vacuum pump required (Venturi nozzle), as the vacuum is generated via the connection to the compressed air supply in your workshop.
- No nitrogen is necessary due to storage in a vacuum.



airTec

AN IDEAL INTRODUCTION TO ZERO JOINT TECHNOLOGY

The airTec process has established itself as the optimum zero joint solution for woodworking shops and medium-sized companies. HOMAG's response to increases in demand is an innovative and more efficient airTec solution that ensures a more cost-effective use of resources. All laser-compatible edging types that are currently available on the market can be processed with airTec. This means great flexibility for all materials and colors.



Gluing edges "without joints"

In the airTec process, the edge and panel are bonded using hot air. This requires the use of special edges. These consist of a decorative layer and a functional layer. Using the HOMAG airTec unit, the functional layer is melted at a constant temperature and volume outflow and optimally applied to the narrow workpiece face.



Easy integration

The airTec reactivation unit is installed in such a way that you can work with either the standard application unit or the airTec system. Image of EDGETEQ S-200 model 1110 AT, 1120 AT and 1130 AT.

Snipping units

FOR CUTTING THE OVERHANGS ON THE FRONT SIDES

The snipping units perfectly prepare the workpieces for subsequent trimming. The front side can be snipped straight or with a chamfer.



Snipping unit

Exact snipping cut via a robust snipping unit with a highly precise linear guide.



Snipping unit

Exact snipping cut via a robust snipping unit with a highly precise linear guide. Automatic chamfer/straight adjustment included as standard on the 1130 FC, 1120 F and 1130 AT models.



Can be automated

For a quick change between flush snipping, e.g. of solid strips or shelves, and cutting with an overhang, e.g. for post-trimming with a profile trimming unit.

Trimming units for flush trimming

Our fine-milling units offer the perfect solution for processing edge overhangs. The trimming units are only equipped with tools that collect the chips in a controlled manner.



Trimming unit

Trimming unit with DFC (dust flow control) tool technology for optimal suction.



Trimming unit with pneumatic three-point adjustment (optional)

For more efficient production and significant time savings during changeover.

Profile trimming unit

Unit for rounding the edges on the front and rear edge of the workpiece. The profile trimming unit is an all-rounder. Users can choose between adjusting the unit manually or electropneumatically. The design is then executed up to a speed of 8 m/min.



Structural shelves

Profile trimming is also possible on workpiece sides without an edge. This applies not only to structural shelves, but also to upper and lower shelves, shelf inserts and partition panels.



FF6210 profile trimming unit

Optimum profile trimming without making adjustments thanks to the linked DIA tool and detector roller. With an optional automatic adjustment between thin and thick edges.



Finishing units

With optimally matched finishing units, HOMAG makes the quality of your products perfect.



Glue scraper unit
For the perfect finish.



Profile scraper unit
Unit for smoothing radii and chamfers. Equipped with changer heads to allow rapid profile changes.



Buffing unit
For polishing edges for a natural color.



The right machine for your needs

The machines from the S-200 series offer you comprehensive solutions for manufacturing your products flexibly and economically. Whether living room, bedroom and kitchen furniture, functional office furniture, superior shop fitting solutions or batch size 1 production for individual requirements – HOMAG offers a well-designed product range to meet any requirement. Using these machines can also make current trends easily achievable for you and your employees.



Technical data

EDGETEQ S-200 SERIES

	Model 1100	Model 1110 F	Model 1110 AT	Model 1120 F	Model 1120 FC
Overall length (mm)	3690	3690	3690	4305	4305
Feed (m/min)	8			11	8
WORKING DIMENSIONS					
Workpiece width (mm) * for workpiece thickness 8–22 mm	70				
Workpiece thickness (mm)	8–40				
Edge thickness rollers (mm)	0.3–3				
Edge thickness strips/moldings (mm)	0.3–3				
Joint trimming unit		✓	✓	✓	✓
Magazine (gluing station/pressure zone)	✓	✓	✓	✓	✓
Snipping unit	✓	✓	✓	✓	✓
Chamfer/radius trimming unit	✓	✓	✓	✓	✓
Profile trimming unit					✓
Profile scraper					
Glue joint scraper					
Buffing unit					
Two finishing units	✓	✓	✓	✓	✓

	Model 1120 AT	Model 1130 FC	Model 1130 AT
Overall length (mm)	4305	4605	4605
Feed (m/min)	8	11	8
WORKING DIMENSIONS			
Workpiece width (mm) * for workpiece thickness 8–22 mm	70		
Workpiece thickness (mm)	8–40	8–60	
Edge thickness rollers (mm)	0.3–3		
Edge thickness strips/moldings (mm)	0.3–3	0.3–3 (opt. 0.3–6)	0.3–3
Joint trimming unit	✓	✓	✓
Magazine (gluing station/pressure zone)	✓	✓	✓
Snipping unit	✓	✓	✓
Chamfer/radius trimming unit	✓	✓	✓
Profile trimming unit	✓	✓	✓
Profile scraper		✓	✓
Glue joint scraper		✓	✓
Buffing unit		✓	✓
Two finishing units	✓		

* Dependent on the workpiece thickness

Fast support:
94% resolution rate
via our hotline

Close to you:
1,350 service experts worldwide

We get things moving:
Over 1,000 worldwide spare parts
shipments each day

No one else has that:
Electronic documentation on over
150,000 machines, available in 28
languages

LIFE CYCLE SERVICES

Improved performance, more efficient processes, faster help, assurance of availability and smarter working.

VAL YOU comes from VALUE ADDED. Our objective is derived from this name: We create added value for your business by helping you get the most out of your processes. Every day.



HOMAG Group AG

info@homag.com
www.homag.com

YOUR SOLUTION